

BASE À CANTRUST POST BASE



CARACTÉRISTIQUES/FEATURES :

MATÉRIEL/MATERIAL:

- Acier en carbone/Carbone steel.
- SS304
- SS316

FINITION/FINISH:

- Electro galvanisé/Electro galvanized.

STANDARD:

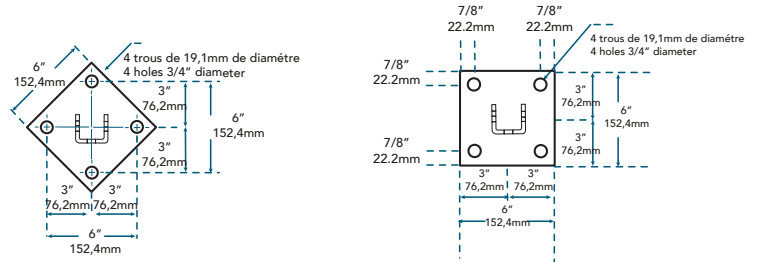
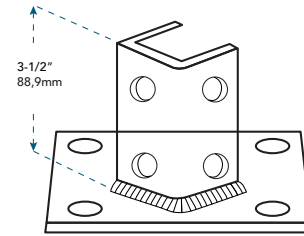
- Galvanisé à chaud/Hot dip galvanized.

TAILLE/SIZE:

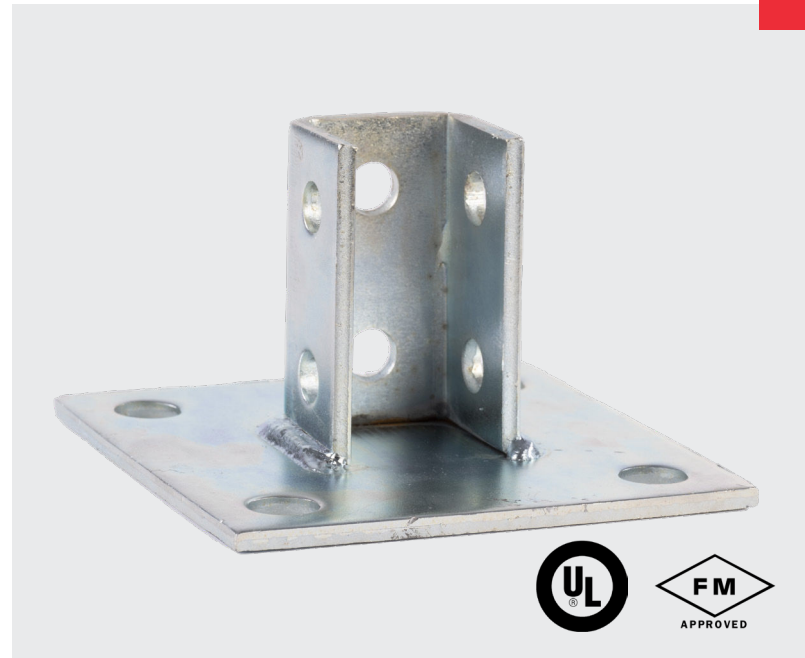
6x6x3-1/2"

USAGE:

- Conçu pour connecter le canal de charpente métallique /Designed to connect metal framing channels.



UNITÉ/ UNIT	TAILLE/ SIZE	CODES
in mm	6x6x3-1/2	CANSUP
in mm	6x6x3-1/2	CANSUPA



www.oneworldsupply.ca



514 378-0049



2024-One World Supply Inc. Tous droits réservés.
2024-One World Supply Inc. All right reserved.